



Also available:  
**COLLEGE PARK  
 VICTOR™**  
*pneumatic knee*

Step victoriously. The Victor knee is a single-axis, pneumatic knee joint featuring a friction brake to control stance phase. This knee is the ideal solution for low to moderate activity users, as it can adjust to accommodate both slow and fast paced walking. It may also work well for patients looking to increase their activity level after rehabilitation. The Victor is an economical option that instills confidence and freedom in patients.

**COLLEGE PARK  
 CAPITAL**  
*hydraulic knee*

The Capital is a hydraulic, single-axis knee joint that is easy to use for both patients and clinicians. Featuring smooth and responsive hydraulics during both swing and stance phase, this knee is designed to accommodate the variable gait of the user. Durable, sleek, and fresh water friendly, the Capital is handmade in America with care. This knee also features easy mode selection and standard 4mm adjustments for simple set up. The Capital is a strong, reliable solution for moderate to high activity users.



College Park designs and manufactures a full line of anatomically correct, custom built prosthetic solutions. College Park is ISO 13485 certified with an extensive focus on quality testing, and proudly sources and produces all products entirely in the USA. With precise engineering and quality manufacturing, College Park is committed to innovating human locomotion solutions for users all over the world.



**NEW AND IMPROVED!**  
 UPDATED LOCK AND  
 INTERNALIZED ADJUSTMENTS



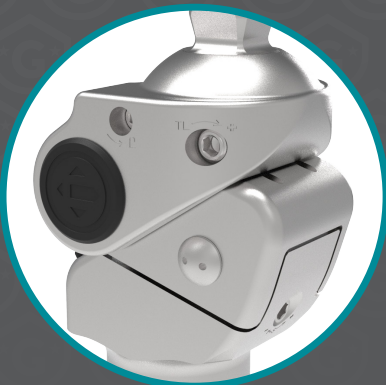
Introducing the new and improved Guardian knee! This lightweight, mechanical knee features a friction brake for stance control, stance flexion, and extension assist. It is best suited as a rehabilitation tool for new patients or permanent solution for low-impact users. With a newly designed locking mechanism and changeable toe load adjustment, patients may find it much easier to lock and unlock. To enhance the sleek look and efficient function, our engineers removed the levers from either side of the knee. All adjustments are now streamlined and internalized! The Guardian also has a central remote lock feature that can be disengaged as the patient progresses to provide the full 145 degrees of anatomical motion.

## NEW LOCKING FUNCTION AND DESIGN

To improve the user experience, College Park implemented a new, central locking mechanism that features toe load adjustment for fine tuning.



OLD



NEW



OLD



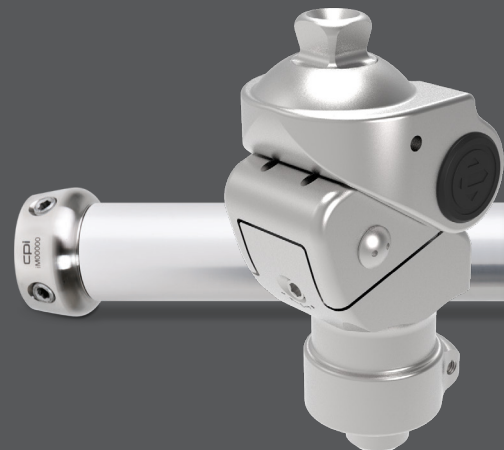
NEW

## UPDATED EXTERNAL LOCK

The updated manual lock has added accessibility, aiming to make daily tasks easier for patients. The external lock allows the Guardian to operate as a single-axis knee joint. It can be easily disengaged for sitting, while a simple standing motion can lock the knee again. Prosthetists can deactivate the locking function at any time as the patient's level of ability grows.

## BETTER TOGETHER

Pair the Guardian with any K2 foot from College Park to maximize product performance! Whether you're seeking vacuum benefits, hydraulic movement, or enhanced stability, we have solutions for you.



Odyssey K2



Celsus



Celsus iVT

# EASILY ADJUSTABLE

By removing the levers on either side of the knee, College Park streamlined and internalized all adjustments. Prosthetists can adjust extension assist, brake sensitivity, and brake friction without removing the knee. All adjustments can be made with a standard 4mm hex key.



### L-ADJUSTMENT

#### Brake Sensitivity

Turning the load adjustment clockwise will increase the amount of load required to initiate braking.



### S-ADJUSTMENT

#### Stance Flexion

Adjustments can be made to alter the amount of stance flexion before the brake is activated.



### E-ADJUSTMENT

#### Extension Assist

This feature changes the rate of extension assist to improve heel rise.



### TL-ADJUSTMENT

#### Lock Release Sensitivity

The Guardian may be adjusted to require an extension moment (toe load) to unlock the knee. In this case, pulling on the dual function lever alone will not unlock the knee.



## TECHNICAL SPECIFICATIONS

**MATERIAL**  
aluminum

**WEIGHT**  
533 g

**WEIGHT LIMIT**  
275 lbs | 125 kg

**FLEXION RANGE**  
145°

**WARRANTY**  
2 years

**L CODES**  
L5812, L5845, L5850, L5925

The listing of codes with these products should not be construed as a guarantee for coverage or payment. Ultimate responsibility for the coding of services/products rests with the individual practitioner.

**OVERALL HEIGHT**  
13.1 cm

**DISTAL ATTACHMENT**  
30 mm Pylon Receiver

**DOME TO KNEE CENTER**  
2.6 cm

